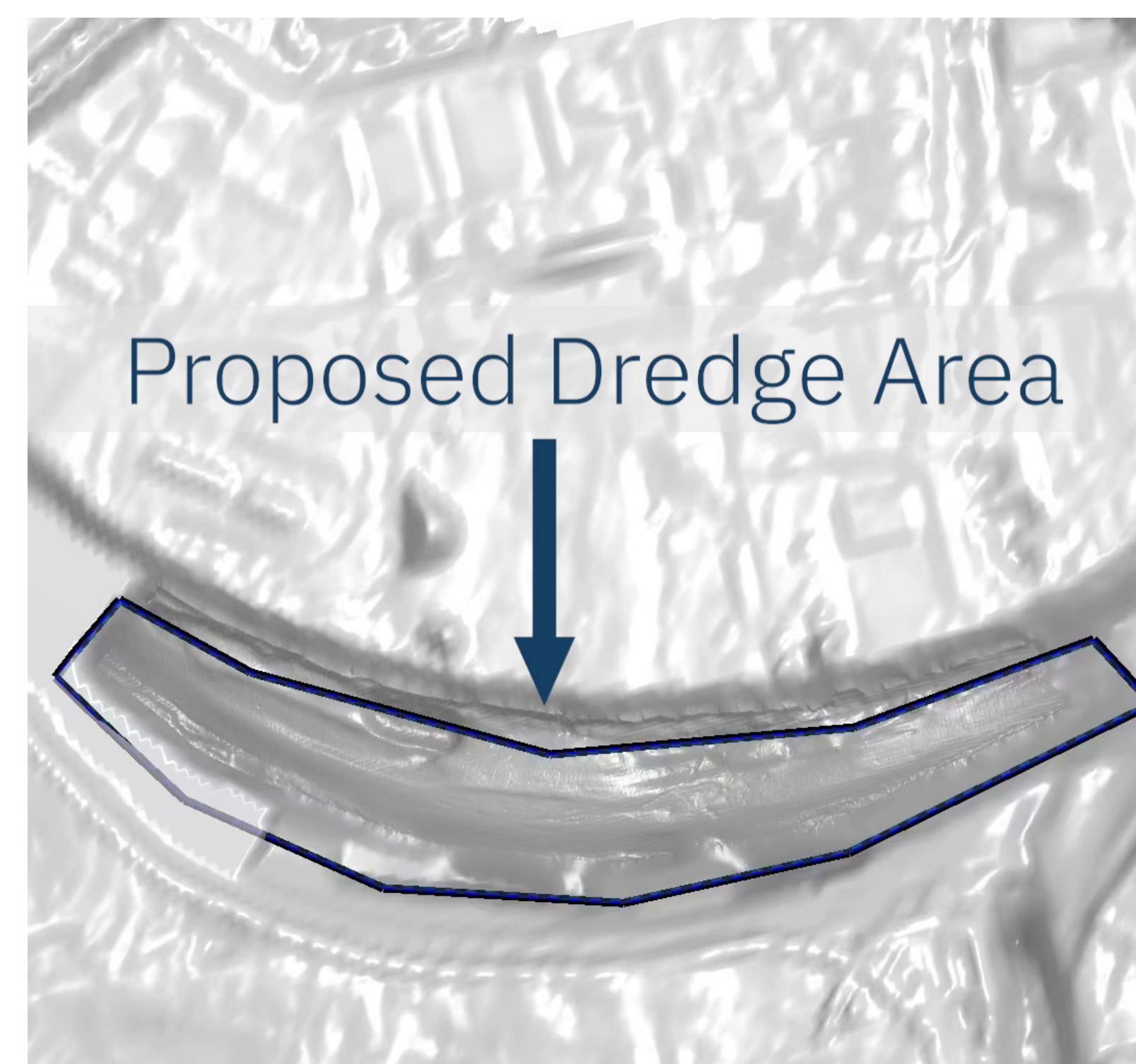


Determining Extent and Timing of Historical Dredging

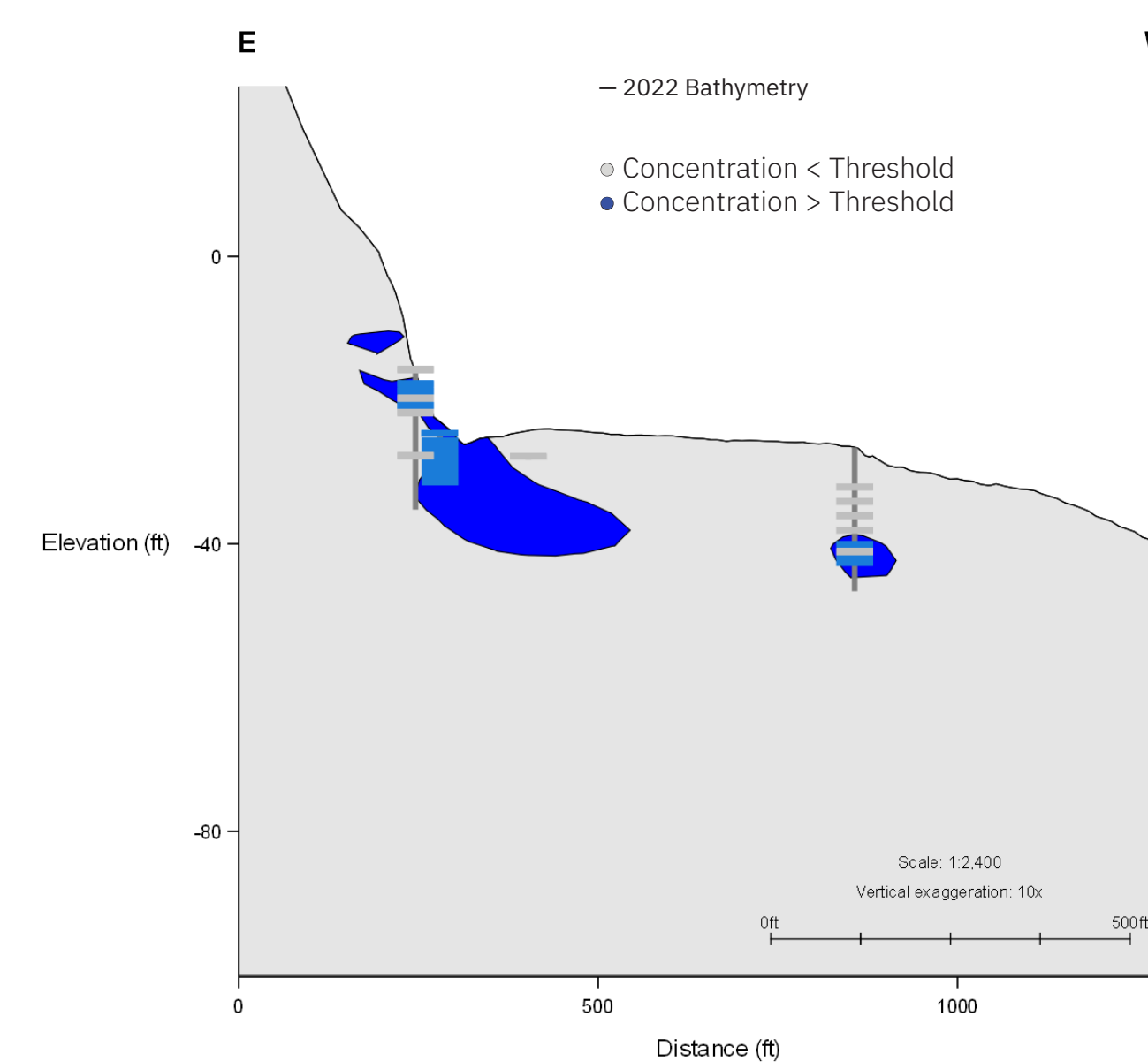
Logan Uselman and Carolyn Huynh (Integral Consulting Inc., USA), Debbie Deetz Silva (EVRAZ Inc. NA)

Problem: Unknown location of a historic dredging event needed to inform conceptual site model and remedial design

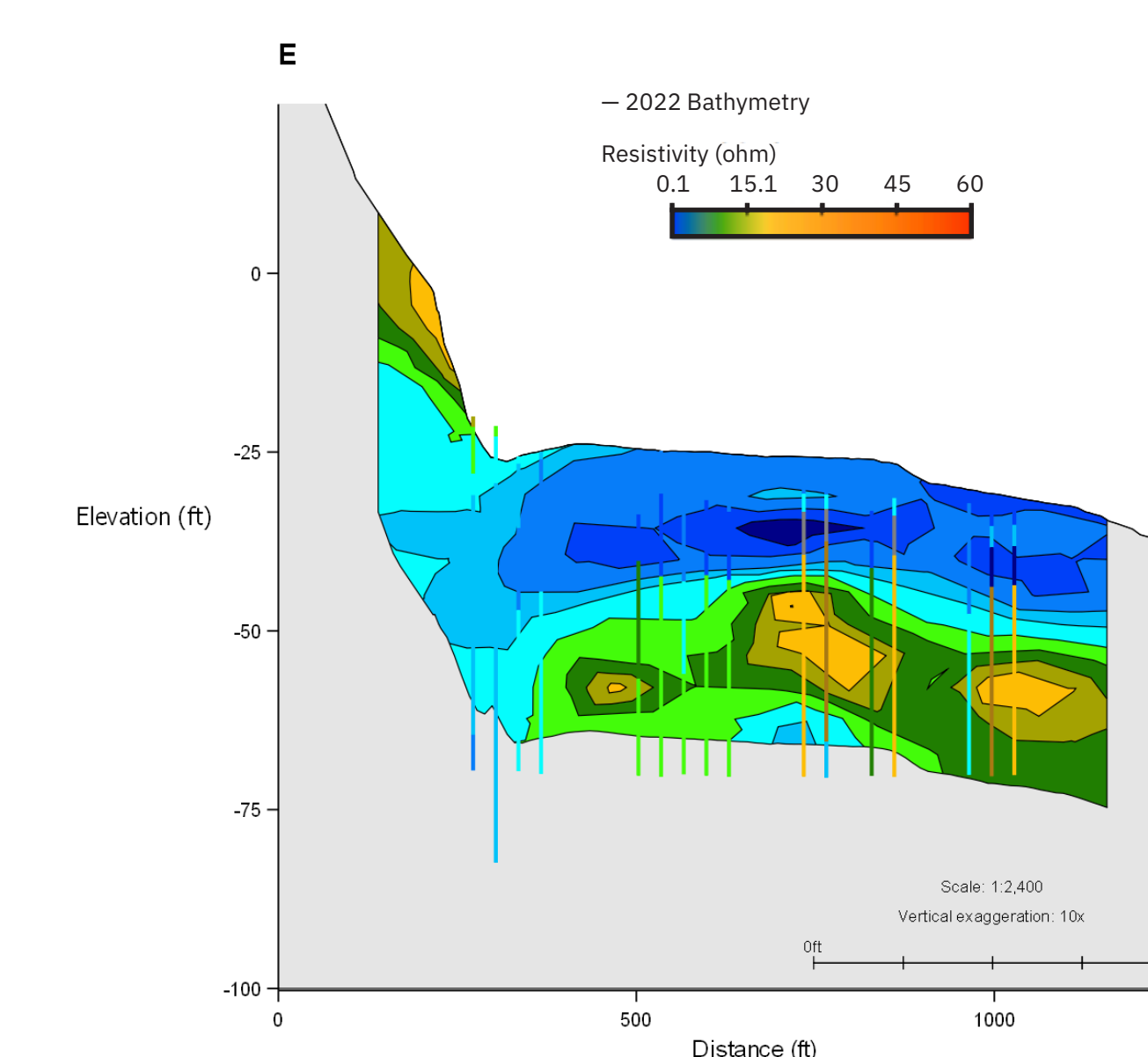


U.S. Army Corp of Engineers permit to dredge up to 60 ft in 1967

2. Sediment Chemistry



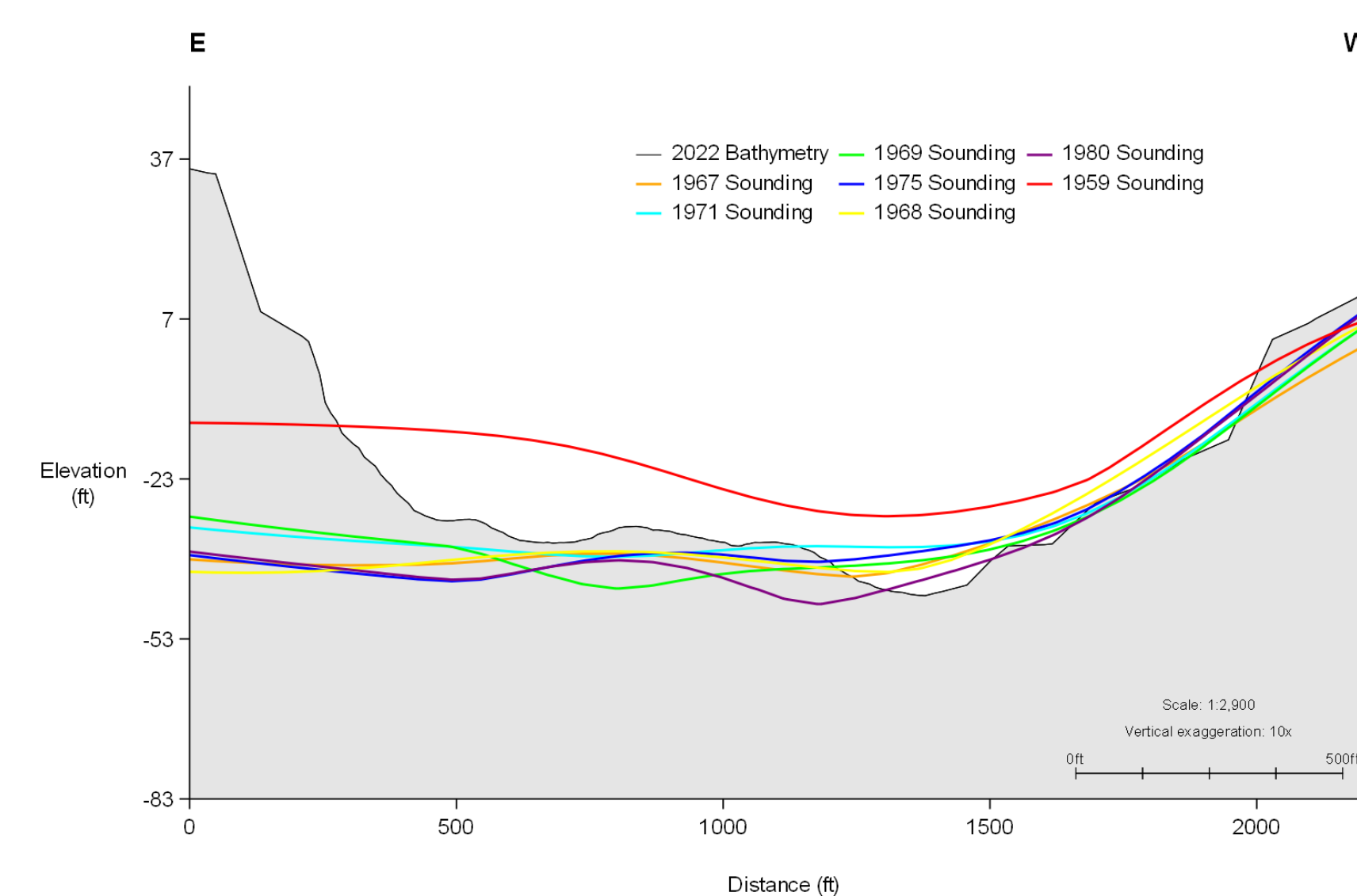
4. Resistivity



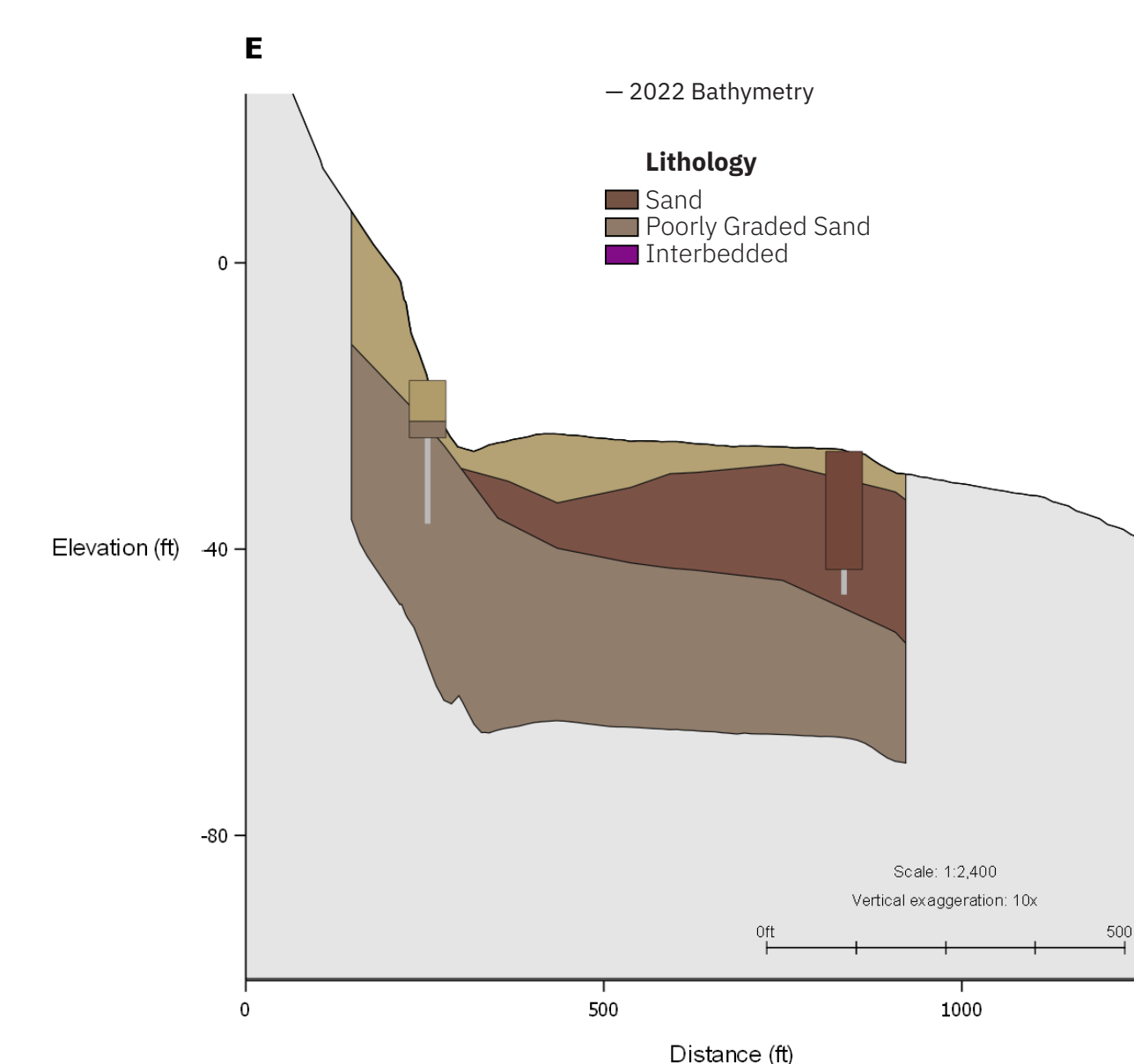
Instructions

Follow the QR codes to see videos for each item.

1. Historical Soundings



3. Lithology



- Started in 1967 and completed in 1970.
- Dredging appears to have occurred in stages.
- Literature reviews from this area also indicate a small area was dredged in 2011 and an unknown area was dredged in 1989.
- Dredging appears to have occurred over entire proposed area.

Logan Uselman, Ph.D.
Integral Consulting Inc.
(385) 955-5180
luseلمان@integral-corp.com

